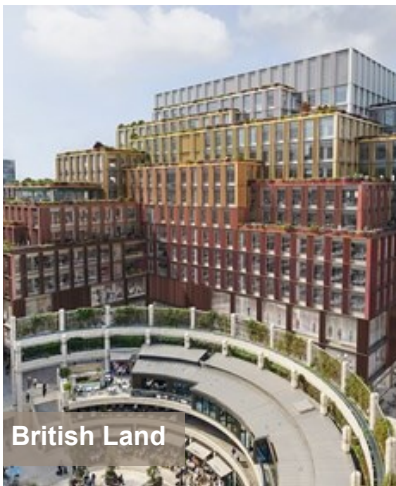


# Murray Birrell

Chartered Surveyors

mb

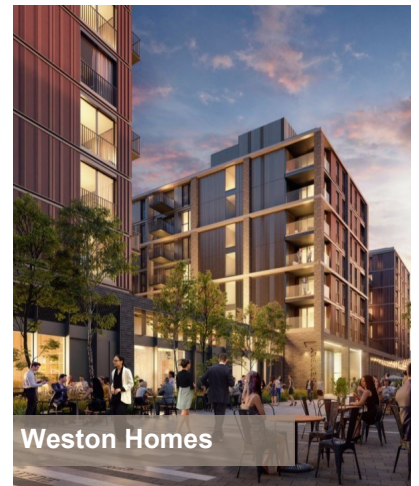
NEWSLETTER SPRING 2019



British Land

## LATEST CLIENTS

- British Land
- The Howard de Walden Estate
- Trustees of St. Clere Estate
- Lewisham Homes
- One Housing Group
- Weston Homes
- Fitzgeorge & Fitzjames Freehold
- Berkeley Rowe



Weston Homes

## PRINCIPAL DESIGNER SERVICE

Having carried out the role on our own projects (where we are the main designer) for many years, following requests from clients, we are now pleased to offer this as a stand-alone service.

Our team is headed up by Associate Director, Sam Field MRICS, who will be delighted to receive any enquiries: [mb@murraybirrell.co.uk](mailto:mb@murraybirrell.co.uk).

## PETER WADE APPOINTED ON RICS AWARDS 2019 JUDGING PANEL

Conservation specialist, Peter Wade FRICS, Certified Historic Building Professional, has been appointed for a third term on the prestigious RICS Awards 2019 judging panel.

[Read More](#)

## PLEASE GET IN TOUCH TO DISCUSS A PROJECT OR SERVICE

T 020 7499 6317 | 01689 898288

E [mb@murraybirrell.co.uk](mailto:mb@murraybirrell.co.uk)

[www.murraybirrell.co.uk](http://www.murraybirrell.co.uk)

## INTERVIEW WITH STUART BIRRELL FOR PARTYWALLPRO.COM

Read an interview with our co-founder, Stuart Birrell FRICS, for Party Wall PRO.

He talks about party wall fees, good practice, training for party wall surveyors and much more.

[Read More](#)

## PROJECT UPDATES



### CONTRACT ADMINISTRATION

Belgravia, SW1

Murray Birrell has been appointed to survey this Grade II Listed Building and prepare a specification of works for the external repair and redecoration. The property is located in one of London's prime residential Squares.



### NEIGHBOURLY MATTERS

South Quay Plaza, E14

Stuart Birrell is delighted to be appointed as Party Wall Surveyor by a neighbour of the landmark property South Quay Plaza, near Canary Wharf, for the next phase of construction works.



### NEIGHBOURLY MATTERS

Various Locations UK

Mark Stott has been appointed as Party Wall Surveyor for a large retail chain with premises all over the UK. Recent instructions have involved projects in York, Gloucester, Birmingham and Bicester.



### DILAPIDATIONS

Paddington, W2

Murray Birrell has been appointed to prepare a Terminal Schedule of Dilapidations on office premises in Paddington. Dilapidations are a growth area for the firm and we are delighted to receive this new instruction from a new and prestigious client.

## PROJECT UPDATES



### FIRE REINSTATEMENT

St. John's Court, SE13

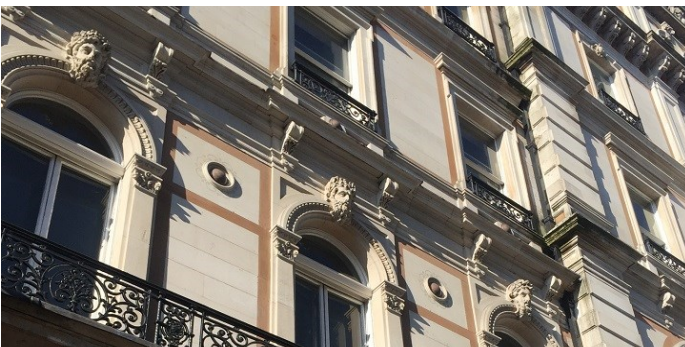
Murray Birrell has been instructed to carry out an inspection and prepare a specification of works for the reinstatement of this building following a fire at the premises last autumn. The works will include for the replacement of the burnt out roof, structure and coverings, new windows, floors, walls and common parts.



### LANDLORD & TENANT

Mayfair, W1

Murray Birrell has been appointed as Landlord's Representative in respect of a series of tenant fit-out works following completion of a shell and core scheme at this significant central London building.



### CONTRACT ADMINISTRATION

Belgravia, SW1

Refurbishment of Grade II listed building for a private corporate client to form new high-end office accommodation. Works include new services and high level specifications for principle areas. Murray Birrell are working with an Architect as lead designer, and are undertaking all contract administration duties on this £2.8m scheme.



### CONTRACT ADMINISTRATION

Coopers' Hall, EC2

Murray Birrell was appointed to undertake the refurbishment of the commercial kitchen at Coopers' Hall which had not been extensively overhauled since the 1980s. The brief was to modernise the kitchen and dishwash area and to bring it in line with current regulations, giving the space a future life expectancy of a minimum of 15 years.

## PROJECT UPDATES



### CONTRACT ADMINISTRATION

Chelsea Wharf, SW6

Murray Birrell was instructed at tender stage to run this external repair project on a 1920s former factory. It is now used as modern office accommodation, designers' studios and apartments overlooking the Thames, close to the Lots Road Power Station development and Chelsea Harbour.



### CONTRACT ADMINISTRATION

Pierhead Wharf, E1

Murray Birrell has been instructed to undertake the external repair and redecoration and internal refurbishment programme of the common parts of this residential block of flats located in Wapping High Street, London E1.



### CLERK OF WORKS SERVICES

Bloomsbury, London WC1

Murray Birrell was instructed to provide Clerk of Works' services on a large mansion block in a busy central London location for one of their Landed Estate Clients.

Based on a successful outcome of the works, we are also pleased to announce that we have been retained for the second phase of three which, as before, includes replacement of the life expired roof coverings together with external repairs and cyclical redecoration.

## MURRAY BIRRELL UPDATES

### INTERVIEW



#### BECOMING CHARTERED SURVEYOR AT 44.

Member of our team, Sam Field, qualified as a Chartered Surveyor in December 2018. He agreed to 'go public' on what the process involved and what it means to him to reach this career milestone somewhat later in life. We hope it's an inspiration to others working in our industry who have not yet achieved Chartered status.

We are also pleased to announce that Sam became an Associate Director on 1<sup>st</sup> April.

Sam is pictured here with Tim Neal FRICS, RICS President-Elect, receiving his Diploma.

[Read More](#)

### NEW ARTICLE



#### MAINTAINING HISTORIC BUILDINGS BY OUR CONSERVATION SURVEYOR

At Murray Birrell we've been working with historic buildings for many years, including properties within Conservation Areas and buildings which are Listed and of high architectural status.

Our conservation specialist, Peter Wade FRICS, outlines the principles involved.

[Read More](#)

### CONTACT US



You can now follow us on Twitter @MurrayBirrellUK and our LinkedIn company page for more frequent updates, news on what's happening here at Murray Birrell, and the clients we are working with.

T 020 7499 6317 | 01689 898288

E [mb@murraybirrell.co.uk](mailto:mb@murraybirrell.co.uk)

[www.murraybirrell.co.uk](http://www.murraybirrell.co.uk)